

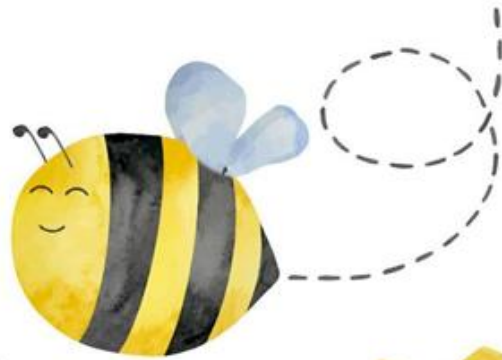
# Hello!

OCCP, uses a two-year rotation for Themes.

For the 2024/2025 school year we will be using “year A.”

Let's have a great year!

Ms. Brenda



Always BEE kind ...

# Ozaukee Child Care and Preschool


## *Two Year Curriculum Rotation*

Month	Year A	Year B	Holiday/Special Event
<b>September</b> <i>Learning Something New Every Day</i>	<ul style="list-style-type: none"> <li>• My Classroom</li> <li>• Friends</li> <li>• Fire Safety</li> <li>• Apples</li> <li>• My Neighborhood</li> </ul>	<ul style="list-style-type: none"> <li>• Back to School</li> <li>• Myself and My Birthday</li> <li>• Fire Fighters</li> <li>• Family</li> <li>• Orchards</li> </ul>	<ul style="list-style-type: none"> <li>• Labor Day</li> <li>• Grandparents Day</li> <li>• First Day of Autumn</li> <li>• Apple Orchard Field Trip</li> <li>• Johnny Appleseed's Birthday</li> </ul>
<b>October</b> <i>Life is Better on the Farm</i>	<ul style="list-style-type: none"> <li>• Pumpkins</li> <li>• Autumn</li> <li>• Tractors</li> <li>• Veggies</li> <li>• Halloween</li> </ul>	<ul style="list-style-type: none"> <li>• Corn</li> <li>• Scarecrows</li> <li>• Pumpkins</li> <li>• Farm</li> <li>• Halloween</li> </ul>	<ul style="list-style-type: none"> <li>• Halloween</li> <li>• Pumpkin Patch Field Trip</li> </ul>
<b>November</b> <i>Fall</i>	<ul style="list-style-type: none"> <li>• Leaves</li> <li>• Nocturnal Animals</li> <li>• Pilgrims and Native Americans</li> <li>• Thanksgiving</li> </ul>	<ul style="list-style-type: none"> <li>• Feelings/Emotions</li> <li>• Turkeys</li> <li>• Hibernation/Bears</li> <li>• Thankful</li> <li>• Thanksgiving</li> </ul>	<ul style="list-style-type: none"> <li>• Election Day</li> <li>• Veteran's Day</li> <li>• Thanksgiving</li> </ul>
<b>December</b> <i>Things to Love about December</i>	<ul style="list-style-type: none"> <li>• Cookies and Gingerbread</li> <li>• Snowflakes</li> <li>• Holidays Around the World</li> <li>• Hanukkah</li> <li>• Christmas</li> </ul>	<ul style="list-style-type: none"> <li>• Winter Weather</li> <li>• Kwanza</li> <li>• Holidays Around the World</li> <li>• Christmas</li> </ul>	<ul style="list-style-type: none"> <li>• Open House</li> <li>• Wish Tree Gift Opening</li> <li>• First Day of Winter</li> <li>• Ugly Sweater Day</li> <li>• Hanukkah</li> <li>• Christmas Eve</li> <li>• Christmas</li> <li>• New Year's Eve</li> </ul>
<b>January</b> <i>Animals</i>	<ul style="list-style-type: none"> <li>• Animals on the Farm</li> <li>• Ocean Animals</li> <li>• Rainforest</li> <li>• Things with Wings</li> <li>• Animals Down Under</li> </ul>	<ul style="list-style-type: none"> <li>• Reptiles</li> <li>• Arctic Animals</li> <li>• River Animals</li> <li>• Grasslands</li> <li>• Woodlands</li> </ul>	<ul style="list-style-type: none"> <li>• New Year's Day</li> <li>• MLKJ Day</li> <li>• Staff Development Day</li> <li>• Beach Day</li> </ul>
<b>February</b> <i>Love others, Love Yourself</i>	<ul style="list-style-type: none"> <li>• Dental Health</li> <li>• Healthy Choices</li> <li>• Valentine's Day/ Love</li> <li>• Move your Body</li> <li>• Hearts</li> </ul>	<ul style="list-style-type: none"> <li>• Hygiene</li> <li>• Healthy Foods</li> <li>• 5 Senses</li> <li>• Black History</li> <li>• Valentine's Day/ Love</li> </ul>	<ul style="list-style-type: none"> <li>• Groundhog Day</li> <li>• Valentine's Day</li> <li>• Presidents Day</li> <li>• Winter Olympics- every 4 years</li> </ul>

<b>March</b> <i>Reading is Always a Good Idea</i>	<ul style="list-style-type: none"> <li>• Dr. Seuss</li> <li>• Choose an Author</li> <li>• Classroom Favorites</li> <li>• Letters</li> <li>• Fairy Tales</li> </ul>	<ul style="list-style-type: none"> <li>• Eric Carle</li> <li>• Choose an Author</li> <li>• Classroom Favorites</li> <li>• Nursery Rhymes</li> <li>• Letters</li> </ul>	<ul style="list-style-type: none"> <li>• Dr. Seuss' Birthday</li> <li>• St. Patrick's Day</li> <li>• First Day of Spring</li> </ul>
<b>April</b> <i>We Are All Growing</i>	<ul style="list-style-type: none"> <li>• Spring Weather</li> <li>• Rain</li> <li>• Earth</li> <li>• Easter</li> <li>• Frog Life Cycle</li> </ul>	<ul style="list-style-type: none"> <li>• Spring</li> <li>• Rainbows</li> <li>• Eggs</li> <li>• Recycling</li> <li>• Flowers</li> </ul>	<ul style="list-style-type: none"> <li>• Egg Hunt</li> <li>• Week of the Young Child</li> <li>• Spring Celebration</li> <li>• Earth Day</li> </ul>
<b>May</b> <i>On the Go</i>	<ul style="list-style-type: none"> <li>• Road Transportation</li> <li>• Air Transportation</li> <li>• Water Transportation</li> <li>• Rail Transportation</li> <li>• Space Transportation</li> </ul>	<ul style="list-style-type: none"> <li>• Construction Trucks</li> <li>• Bicycles</li> <li>• Community Helper Vehicles</li> <li>• School Buses</li> <li>• Road Signs</li> </ul>	<ul style="list-style-type: none"> <li>• Teacher Appreciation Week</li> <li>• Cinco De Mayo</li> <li>• Muffins with Mom</li> <li>• Memorial Day</li> </ul>
<b>June</b> <i>Getting Back to Nature</i>	<ul style="list-style-type: none"> <li>• Outside Work</li> <li>• Water Safety</li> <li>• Summer</li> <li>• Dinosaurs</li> <li>• Nature</li> </ul>	<ul style="list-style-type: none"> <li>• Sun</li> <li>• Bees</li> <li>• Gardens</li> <li>• Thunder and Lightning</li> </ul>	<ul style="list-style-type: none"> <li>• Flag Day</li> <li>• Donuts with Dad</li> <li>• First Day of Summer</li> <li>• Potential Field Trip</li> </ul>
<b>July</b> <i>Go Play Outside and Wonder</i>	<ul style="list-style-type: none"> <li>• Stars and Stripes</li> <li>• Sports/Games</li> <li>• Planets/ Space</li> <li>• Robots</li> </ul>	<ul style="list-style-type: none"> <li>• Fireworks</li> <li>• Ocean</li> <li>• Butterflies/ Caterpillars</li> <li>• Ice Cream</li> <li>• Bugs</li> </ul>	<ul style="list-style-type: none"> <li>• Independence Day</li> <li>• Potential Field Trip</li> <li>• Summer Olympics- every 4 years</li> </ul>
<b>August</b> <i>Splish, Splash, Sunshine</i>	<ul style="list-style-type: none"> <li>• Beach</li> <li>• Camping</li> <li>• Mermaids and Pirates</li> <li>• Music</li> <li>• Luau</li> </ul>	<ul style="list-style-type: none"> <li>• Watermelon</li> <li>• Clouds</li> <li>• Shark Week</li> <li>• Sunflowers</li> <li>• End of Summer</li> </ul>	<ul style="list-style-type: none"> <li>• End of Summer Party</li> <li>• Potential Field Trip</li> </ul>

# September

## Learning Something New Every Day


	Monday	Tuesday	Wednesday	Thursday	Friday
My Classroom Letter - A Number - 1 Shape - Star Color - Red	2 Labor Day 	3	4	5	6
My Neighborhood Letter - B Number - 2 Shape - Square Color - Orange	9 Grandparent's Day Celebration- Dress like Grandma or Grandpa	10	11 Patriot Day- Wear Red White and Blue	12	13 Packers First Home Game on Sunday (15 <sup>th</sup> ) - Wear your Green and Gold
Fire Safety Letter - C Number - 3 Shape - Triangle Color - Yellow	16	17 Dress as a Fire Fighter or Wear Red	18	19	20
Apples Letter - D Number - 4 Shape - Circle Color - Green	23	24	25	26 Johnny Appleseed's Birthday- Wear a pot on your head or a hat	27
	30				

September 8<sup>th</sup> - Grandparent's Day

September 22<sup>nd</sup>- First Day of Autumn

# October

## Life is Better on the Farm

	Monday	Tuesday	Wednesday	Thursday	Friday
Autumn Letter - E Number - 5 Shape - Heart Color - Blue	30	1	2	3	4
Tractors Letter - F Number - 6 Shape - Rectangle Color - Yellow	7	8	9	10 Dress like a Farmer	11
Pumpkins Letter - G Number - 7 Shape - Oval Color - Orange	14	15 Dress like a Pumpkin or Wear Orange	16	17	18
Veggies Letter - H Number - 8 Shape - Diamond Color - Pink	21	22	23 Picture Day 	24 Picture Day 	25
Halloween Letter - I Number - 9 Shape - Crescent Color - Black	28	29	30	31 Halloween Party Wear your Costume	

# November

## Fall

	Monday	Tuesday	Wednesday	Thursday	Friday
					1
Leaves Letter - J Number - 10 Shape - Square Color - White	4	5 Election Day	6 Wear Red Orange and Yellow like the Fall Leaves	7	8
Nocturnal Animals Letter - K Number - 1/11 Shape - Triangle Color - Gray	11 Veteran's Day	12	13	14	15
Pilgrims and Native Americans Letter - L Number - 2/12 Shape - Star Color - White	18	19	20 Pie with Parents 3:15 	21	22
Thanksgiving Letter - M Number - 3/13 Shape - Heart Color - Brown	25	26	27	28 Thanksgiving 	29 

Put up your wish tree the last week in November

# December

## Things to Love about December

	Monday	Tuesday	Wednesday	Thursday	Friday
Cookies and Gingerbread Letter - N Number - 4/14 Shape - Rectangle Color - Purple	2	3	4	5	6
Holidays Around the World OR Snowflakes Letter - O Number - 5/15 Shape - Oval Color - Blue	9	10 Grafton Open House 4-5:30	11 Mequon Open House 4-5:30	12	13
Christmas Letter - P Number - 6/16 Shape - Star Color - Green	16 Pajama Day	17 Silly Sock Day  Wish Tree Gift Opening	18 Ugly Sweater Day	19 Cozy Flannel Day	20 Crazy Hair Day
Hanukkah Letter - Q Number - 7/17 Shape - Circle Color - Black	23	24 Christmas Eve  	25 Christmas Hanukkah 1 <sup>st</sup> Day  	26 Kwanzaa	27
	30	31 New Year's Eve			

First Day of Winter - 21<sup>st</sup>

# January

## Animals

	Monday	Tuesday	Wednesday	Thursday	Friday
Animals on the Farm Letter - R Number - 8/18 Shape - Square Color - Pink			1 New Year's Day 	2	3
Ocean Animal Letter - S Number - 9/19 Shape - Triangle Color - Purple	6	7	8 Beach Day 	9	10
Rainforest Letter - T Number - 10/20 Shape - Star Color - Brown	13	14	15	16	17
Things with Wings Letter - U Number - 1 Shape - Diamond Color - Green	20 MLKJ Day Staff Development Day 8-4 	21	22	23	24
Animals Down Under Letter - V Number - 2 Shape - Rectangle Color - Gray	27	28	29	30	31



# February

*Love others. Love Yourself*

	Monday	Tuesday	Wednesday	Thursday	Friday
<b>Dental Health</b> Letter - W Number - 3 Shape - Oval Color - Orange	3	4	5	6	7
<b>Valentine's Day/ Love</b> Letter - X Number - 4 Shape - Heart Color - Red	10	11	12	13	14 Valentine's Day Party
<b>Healthy Choices</b> Letter - Y Number - 5 Shape - Circle Color - Black	17 President's Day	18	19	20	21
<b>Move your Body</b> Letter - Z Number - 6 Shape - Square Color - White	24	25	26	27	28

Groundhog Day - 2<sup>nd</sup>



# March

## Reading is Always a Good Idea

	Monday	Tuesday	Wednesday	Thursday	Friday
<b>Dr. Seuss</b> Letter - A Number - 7 Shape - Diamond Color - Blue	3 Wear Red and White Dr. Seuss' Birthday	4	5	6	7
<b>Choose an Author</b> Letter - B Number - 8 Shape - Star Color - Blue	10	11	12	13	14
<b>Classroom Favorites</b> Letter - C Number - 9 Shape - Heart Color - Pink	17 St. Patrick's Day - Wear Green	18	19	20 First Day of Spring	21
<b>Letters</b> Letter - D Number - 10 Shape - Rectangle Color - Pink	24	25	26	27	28
	31 Brewer Opening Day - Wear your Brewers!				

Dr. Seuss' Birthday - 2<sup>nd</sup>

# April

## We Are All Growing

	Monday	Tuesday	Wednesday	Thursday	Friday
Spring Weather Letter - E Number - 1/11 Shape - Oval Color - Purple		1 April Fool's Day	2	3	4
Earth Letter - F Number - 2/12 Shape - Diamond Color - Red	7	8	9	10	11 Wear Blue and Green to celebrate the Earth
Easter Letter - G Number - 3/13 Shape - Arrow Color - Green	14	15	16	17 Egg Hunt 	18
Fabulous 50s Letter - H Number - 4/14 Shape - Square Color - Red	21 Shake, Rattle and Roll out of Bed- Wear PJs	22 "Sock" Hop- Wear FUN Socks  Earth Day 	23 Let's Boogy!!- Dress like you're from the 50's	24 Black and white TV for the win!!! - Wear Black and White	25 Hip Hip Hooray- Dress in OCC apparel and colors  Sock Hop from 4-5:30
Frogs/ Frog Life Cycle Letter - I Number - 5/15 Shape - Triangle Color - Yellow	28	29	30 Wear Green 		

Easter - 20<sup>th</sup>

April 7-11<sup>th</sup>- Week of the Young Child

# May

## On the Go

	Monday	Tuesday	Wednesday	Thursday	Friday
				1	2 Derby Day! Wear Fun Hats!
<b>Road</b> Transportation Letter - J Number - 6/16 Shape - Star Color - Orange	5 Cinco De Mayo	6	7 Muffins with Mom 3:15  	8	9
<b>Air</b> Transportation Letter - K Number - 7/17 Shape - Heart Color - Black	12	13	14	15	16
<b>Water</b> Transportation Letter - L Number - 8/18 Shape - Rectangle Color - Yellow	19	20	21	22	23
<b>Rail</b> Transportation Letter - M Number - 9/19 Shape - Oval Color - Brown	26 Memorial Day  	27	28	29	30


May 3<sup>rd</sup>- Kentucky Derby

Mother's Day - 11<sup>th</sup>

Teacher Appreciation 5-9<sup>th</sup>

# June

## Getting Back to Nature

	Monday	Tuesday	Wednesday	Thursday	Friday
<b>Outside Work</b> Letter - N Number - 10/20 Shape - Circle Color - Yellow	2	3	4	5	6
<b>Dinosaurs</b> Letter - O Number - 1 Shape - Diamond Color - Black	9	10 Wear your Dinosaur shirts!	11 Donuts with Dad 3:15 	12	13
<b>Summer</b> Letter - P Number - 2 Shape - Square Color - Purple	16	17	18	19	20 First Day of Summer- Wear your shades to school!
<b>Nature</b> Letter - Q Number - 3 Shape - Triangle Color - White	23	24	25	26	27
	30				

Father's Day - 15<sup>th</sup>

# July

## Go Play Outside and Wonder

	Monday	Tuesday	Wednesday	Thursday	Friday
<b>Stars and Stripes</b> Letter - R Number - 4 Shape - Star Color - Red		1	2	3 Wear Red White and Blue	4 Independence Day 
<b>Sports/ Games</b> Letter - S Number - 5 Shape - Heart Color - Blue	7	8	9 Wear your Sports Jersey	10	11
<b>Planets/ Space</b> Letter - T Number - 6 Shape - Rectangle Color - Green	14 Wear your Planet/Stars Shirt	15	16	17	18
<b>Robots</b> Letter - U Number - 7 Shape - Oval Color - Brown	21	22	23	24	25
<b>Beach</b> Letter - V Number - 8 Shape - Diamond Color - Gray	28	29	30	31	

# August

## Splish, Splash, Sunshine

	Monday	Tuesday	Wednesday	Thursday	Friday
					1
<b>Camping</b> Letter - W Number - 9 Shape - Circle Color - Pink	4	5	6	7	8
<b>Mermaids and Pirates</b> Letter - X Number - 10 Shape - Square Color - White	11	12	13	14 Dress as a Mermaid or Pirate	15
<b>Luau</b> Letter - Y Number - 1/11 Shape - Triangle Color - Gray	18	19 End of Summer Luau	20	21	22
<b>Music</b> Letter - Z Number - 2/12 Shape - Star Color - Orange	25	26	27	28	29





# CHRISTMAS

*Spirit Week!*

DECEMBER 16-20



**MONDAY**

*Pajama day*

**TUESDAY**

*Silly socks day*

**WEDNESDAY**

*Ugly sweater day*

**THURSDAY**

*Cozy flannel day*

**FRIDAY**

*Crazy hair day*





## MONDAY

SHAKE, RATTLE AND ROLL OUT OF BED —  
WEAR PJS

## TUESDAY

“SOCK” HOP — WEAR FUN SOCKS

## WEDNESDAY

LET'S BOOGEY!! — DRESS LIKE YOUR FROM  
THE 50'S

## THURSDAY

BLACK AND WHITE TV FOR  
THE WIN!!! — WEAR BLACK  
AND WHITE

## FRIDAY

HIP HIP HOORAY - DRESS  
IN OCC APPAREL AND  
COLORS

